

## ORBIS Rackable Pallet Specifications

Model	Outside Dimensions		Inside Dimensions		Height *	Weight (lb.)	Load Capacity (lb.)		Rack Compatibility** (lb.)		Truckload Quantity 53' Trailer	See Page:	
	L	W	L	W			Static	Dynamic	Selective / Edge ****				Decking / Center
									****				
40 x 40 DY	40.0	40.0	39.1	39.1	5.0	40.0	30,000	5,000	2,500****	N/A	660	81	
40 x 48 OP CIISF**	47.8	39.9	N/A	N/A	6.6	49.5	30,000	5,000	2,000	5,000	450	87	
40 x 48 OP CIISF LP**	47.8	39.9	47.3	39.4	7.1	49.5	30,000	5,000	2,000	5,000	450	87	
40 x 48 RACK'R**	48.0	40.0	N/A	N/A	5.69	56.0	30,000	5,000	2,800	5,000	570	88	
40 x 48 RCKO**	48.0	40.0	N/A	N/A	6.25	49.0	30,000	5,000	2,200	5,000	510	88	
40 x 48 RCKO LP**	48.0	40.0	47.4	39.4	6.75	49.0	30,000	5,000	2,200	5,000	510	88	
40 x 48 RII CIISC PC FRM	48.0	40.0	N/A	N/A	6.00	59.0	30,000	6,000	3,000	6,000	510	88	
40 x 48 RII CIISC PC FRM LPD	48.0	40.0	46.2	37.9	6.38	59.0	30,000	6,000	3,000	6,000	510	88	
40 x 48 RII CIISC RNR	48.0	40.0	N/A	N/A	5.25	51.0	30,000	6,000	3,000	6,000	650	88	
40 x 48 RII CIISC STR	48.0	40.0	N/A	N/A	6.00	55.0	30,000	6,000	3,000	6,000	510	88	
40 x 48 RII CIISC STR GRM	48.0	40.0	N/A	N/A	6.00	55.0	30,000	6,000	3,000	6,000	510	88	
40 x 48 RII CIISC STR LPD	48.0	40.0	46.2	37.9	6.38	55.0	30,000	6,000	3,000	6,000	510	88	

\* If the pallet has a lip, the lip height is included in the total pallet height.

LP = Perimeter Lip, LPI = Inboard Perimeter Lip, LPD = Discontinuous Perimeter Lip

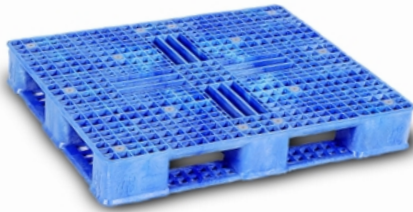
\*\* Available in fire-retardant material. Product specification for fire-retardant pallets differ, please see individual page for product specifications. Racking capabilities for fire-retardant pallets may differ, please contact your ORBIS Sales Representative for additional information.

\*\*\* Reinforced version only.

\*\*\*\* Ratings are for column loads only. For all other load types, please contact your ORBIS Sales Representative.



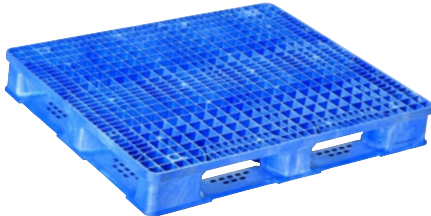
"Subject to the conditions of approval as a plastic pallet as equivalent to wood pallets as described in the current edition of the FM Approval Guide."



### 40 x 48 OP Pallet



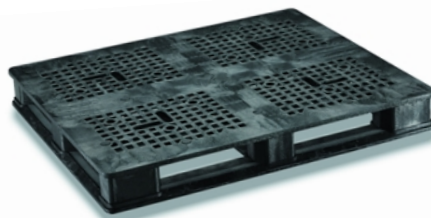
- >> Light-duty design ideal for food, pharmaceutical and industrial applications.
- >> Available in FDA-approved and fire retardant material.



### 40 x 48 RackoCell



- >> Highly sanitary, durable and easily washable.
- >> One-piece construction engineered for the food manufacturing, meat, poultry and pharmaceutical industries.
- >> Available in FDA-approved and fire retardant materials.



### 40 x 48 Rack'R



- >> Available in FDA-approved and fire retardant materials.
- >> Consistent weight, size and low profile make it compatible in most automated handling environments.
- >> Special bottom deck reinforcement makes it suitable for push back and flow rack systems.



### 40 x 48 Rackstar II



- >> Highly impact resistant.
- >> Solid wall design maintains integrity, eliminates cold flow or "creep".
- >> Increased durability and easy to sanitize.
- >> Repairable stringers and picture frame bottom.
- >> Customizable for fluid loads super sack applications.
- >> 100% recyclable with fully removable reinforcement structure.

Interested in recycling your plastic pallets at the end of their service life? "Recycle with ORBIS" is a convenient program designed to effectively recover, recycle and reprocess plastic pallets into other useful products. To learn more, contact your ORBIS Sales Representative.