



Powered by Menasha Corporation

NEW UCP 44 x 56 Pallet for Efficient Food & Beverage Distribution

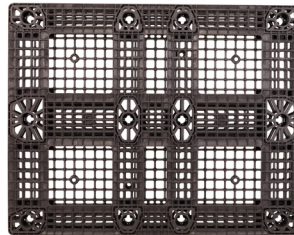
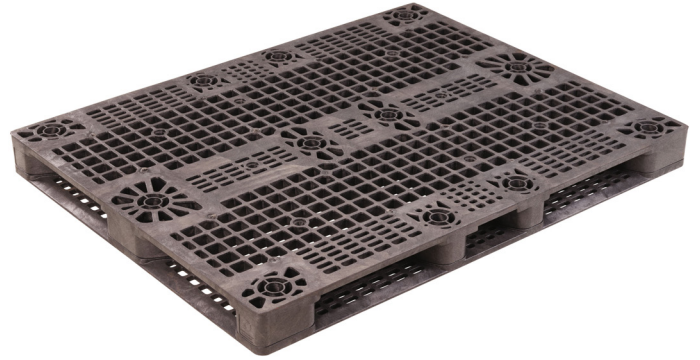
The UCP is a lightweight, yet durable and impact resistant pallet designed to protect and transport product.

Streamline food and beverage can or bottle distribution with the new UCP (Universal Container Pallet). The dimensionally consistent UCP is compatible with many palletizers, depalletizers, automatic strapping/banding systems, conveyors, and pallet washing systems.

UCP is a two-piece snap designed injection foam pallet available in high-density polyethylene (HDPE) or polypropylene (PP) plastic, and can be manufactured in FDA approved material.

- **Hygienic** - Flow-through rib design for easy cleaning and drying
- **Durable** - 12-block design, thick deck ribbing and widened stringers to improve impact resistance
- **Load Stability** - Central banding compatibility with optional anti-slip grommets
- **Accessible** - Open pallet base with chamfered base runners for improved full fork or low-profile hand truck access
- **Labeling** - Optional RFID or bar code configurations
- **Packaging Compatibility** - Optimized with divider sheets, top frames and stretch wrap to maximize product safety
- **Recyclable** - 100% recyclable at end of life

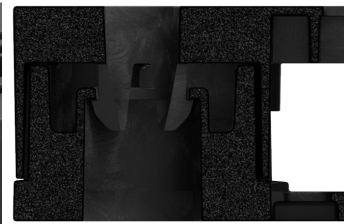
Contact an ORBIS representative to learn more about ORBIS' complete food and beverage system.



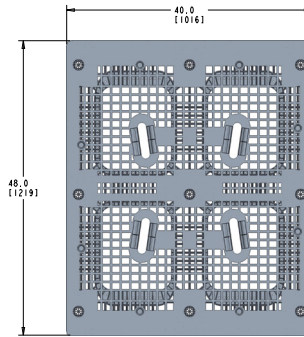
Pallet Bottom



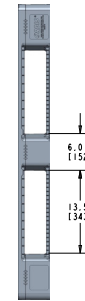
Corner Stretch Wrap Holder



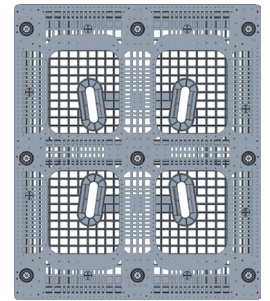
Snap Feature



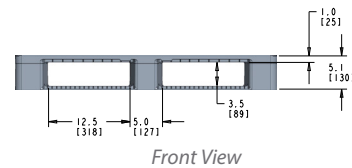
Top View



Side View



Bottom View



Front View

PRODUCT SPECIFICATIONS

Model	Dimensions (in/cm)			Weight (lb/kg)	Fork Opening Height (in/cm)	20' Container Quantity	40' HC Container Quantity	53' Truckload Quantity	53' Plate Truckload Quantity
	L	W	H						
UCP	56.0 142.2	44.0 111.7	4.5 11.4	51.0 23.1	2.7 142.2	187	374	528	575

Feature options include:

- Grommets
- Molded logos
- Hot stamps
- Track and trace



Simplify your supply chain by trusting ORBIS RPM services to manage your food and beverage packaging assets. ORBIS RPM manages packaging supply chains from start to finish, including demand planning, shipping, tracking, cleaning, sorting, reverse logistics and replenishment.