

PRODUCT APPLICATION SHEET

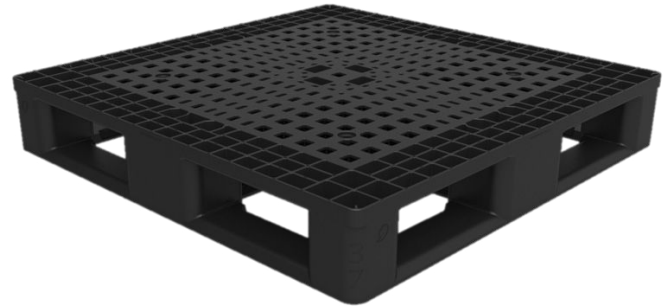
37 x 37 BEV FG Beverage Pallet Offers Distribution Efficiency

ORBIS' 37 x 37 BEV FG is designed to safely and efficiently transport beverage finished goods.

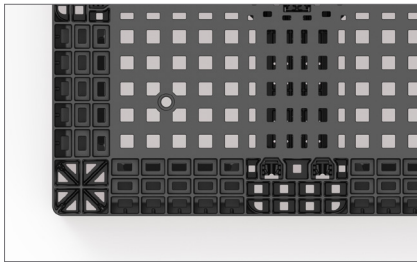
ORBIS Corporation offers the broadest range of leading plastic pallets for the beverage industry. This plastic pallet offers an economic, environmental, and efficient alternative to wood pallets. The 37 x 37 BEV FG is fully compatible with all beverage shell types and corrugated cases designed to ship finished goods to retail.

BENEFITS

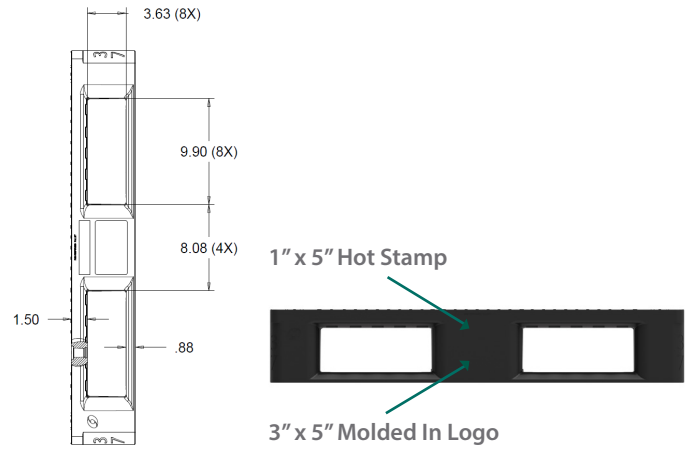
- Molded-in texture to keep product in place during conveyance and transit
- Optimized fork tine openings for ease of entry and exit
- Solid one-piece legs provide extra strength
- Options available: Molded-in Logo, Hot Stamp, Grommets



One-piece leg, deck, and outer stringer improve durability on fork impact.



Specifically designed textured surface to improve the handling of packaging.



Product Specifications

Size (LxW)	Height	Weight (lbs)		Deck Thickness	Fork Tine Open Dimensions			Center Leg Dimensions
		PE	PP		Width	Outer Height	Middle Height	Width
36.8125" x 36.8125"	6.0"	35	34	1.50"	9.90"	3.625"	3.875"	8.08"