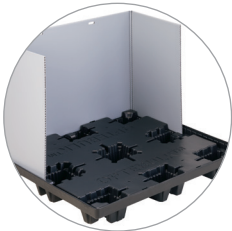


PRODUCT SHEET

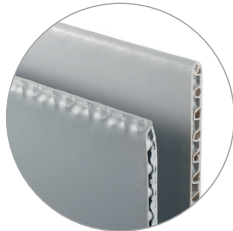
NEW 28-POSITION OPTEBULK4845-52

The OpteBulk container is a sustainable alternative to paper gaylords for storage and distribution of raw material, assemblies and finished goods while offering transportation, packaging, and warehouse cost savings as a reusable collapsible container.

- Container includes reusable plastic pallet, sleeve and topcap
- Industry first 28 total container positions per 53' trailer
- Sleeve is manufactured from a tri-laminated structured core material with bi-directional strength
- Additional heights available to maximize outbound transportation – 27" and 35"
- One-person container assembly and collapse
- Clamshell collapse kits all components together for reverse logistics
- Access doors and 2-piece split-sleeves available for manual loading



Split-sleeve long side opening



Rounded vs. sharp-crimped top edge seal



Active sleeve locks in both pallet and topcap

PRODUCT DIMENSIONS

| OPTEBULK 4845-52 | Outside Dimensions (in) | | | Inside Dimensions (in) | | | Weight (lbs) | Internal Volume (cu. ft) | Access Door Openings | | | | Truckload Quantity 53' Trailer | | | |
|------------------|-------------------------|------|------|------------------------|------|------|--------------|--------------------------|----------------------|------------|------------|------------|--------------------------------|-----------|-----------------|-------------|
| | | | | | | | | | Height (in) | | Width (in) | | System | | Individual | |
| | L | W | H | L | W | H | | | Long Side | Short Side | Long Side | Short Side | Assembled | Collapsed | Pallet / Topcap | Sleeve Only |
| | 48.8 | 44.5 | 51.4 | 46.0 | 41.8 | 43.6 | | | 76.5 | 48.4 | - | 21.0 | - | 23.1 | 56 | 308 |

48" SIDE



45" SIDE

